

# Instability Analysis of Landing Gear During Ground Maneuvering

Ramu.S, Anoop Kumar.S

Dept. of Mechanical Engineering

Sree Chitra Tirunal College of Engineering, Thiruvananthapuram

ramusridar@gmail.com

**Abstract**—Landing gears are the connecting members between aircraft and the ground. They act as the load bearing members between the fuselage and the ground. Landing gear dynamics, especially shimmy and gear walk vibrations, is one of the problems faced today by the aircraft community. In this paper the effect of runway profile on gear walk instability is studied. Later a single beam landing gear model is developed to analyse gear walk phenomena as a result of ABS braking.

**Keywords**— instabilities; gear walk; equivalent model;

## I. INTRODUCTION

Landing gears are the connecting members between aircraft and the ground. They act as the load bearing members between the fuselage and the ground [1,2,3]. The term landing gear indicates one of the main functions of the gear, namely the containment of the landing impact but it fails to describe the other main functions, namely the provision of means for the aircraft to maneuver on the ground, taxi and take off. The predominant task of an airplane is to fly with the best performance achievable. It must not be forgotten, however, that it will spend a good part of its life on the ground. Landing gear dynamics, especially shimmy and gear walk vibrations, is one of the problems faced today by the aircraft community. Though they are not catastrophic, can lead to fatal accidents due to excessive wear. Both instabilities are low frequency vibrations and can also shorten the gear life and cause discomfort to the pilot and passengers. The main reasons are slender fuselages that frequently arise from the stretching of existing aircraft and the use of new, light-weight structures and materials that influence the vibrational properties of fuselage and wings. Not only unsuitable combination of structural stiffness, damping, and pneumatic tire characteristics but also an unlucky combination of brake system design with the tire physics can produce a serious vibration problem. Mainly there are two types of instabilities. They are low frequency and high frequency vibrations (fig.1). High frequency vibrations include squeal and chatter. Low frequency vibrations include gear walk and shimmy, incorporating the applicable criteria that follow.

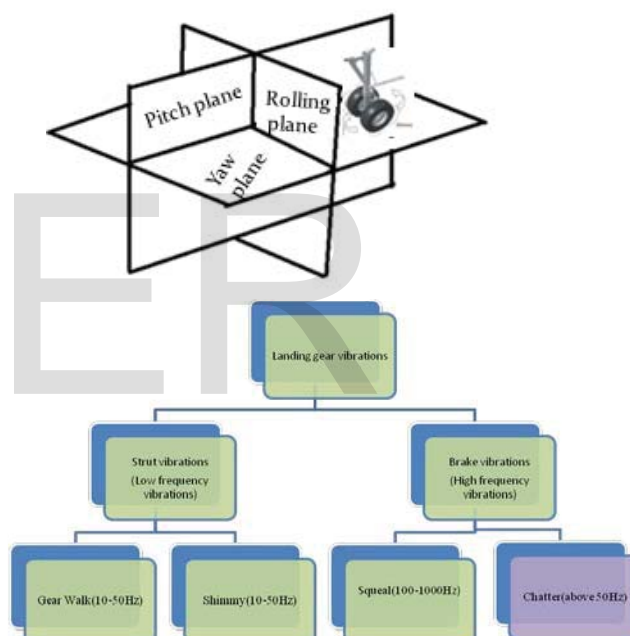


Fig. 1: Instabilities of landing gear

This paper deals with the instability known as “gear walk”, a self-sustaining fore-and-aft low frequency vibration of the LG, primarily due to the coupling of the brake anti-skid system with the leg structural dynamics. Basically, as the brakes are applied and the horizontal ground load develops, the leg flexes rearwards; when an incipient skid is detected by the anti-lock system, the brakes are released and the leg springs forwards. This accelerates the wheel rapidly, tricking the anti-skid system into applying the brake pressure again, and the cycle repeats itself [5]. The frequency range of the phenomenon can be placed within a range between 10 and 50 Hz [5]. While well-known instabilities, such as shimmy, have been extensively investigated through the years [9] the vibration phenomena such as gear walk, chatter and squeal, are only recently being addressed [4, 5, 6, 7, 8, 10, and 11].

Availability of simplified equivalent models of complex landing gears can reduce the modeling cost and time required for modeling. This can provide enough freedom for the designers to analyse more number of models. The runway profiles may have an important role in occurrence of gear walk. The first objective of the paper is thus to study the effect of runway profile on the gear walk instability during taxiing by simulating actual taxiing of a braked aircraft on a runway of having cosine profile and observing the to and fro oscillations on the pitch plane when the aircraft passes through the cosine dip. Initially the mode of braking considered is not Anti Lock Braking System (ABS). Further a single beam equivalent model is developed for analyzing gear walk instability due to tire braking which is applicable to both ABS braking and ordinary dynamic braking.

If compared to the recent works regarding gear walk [4, 5, 6, 7, 8, 10, and 11] this paper presents a simple equivalent single beam model instead of complex landing gear strut to predict the gear walk instability. In this work the effect of runway profile on the gear walk instability is also investigated

## II. GEAR WALK INSTABILITY

### A. Taxiing simulation through a runway with cosine profile

The taxiing simulation in this work is implemented by using MSC Adams/Aircraft2005 which is specialized software for the dynamic analysis of aircrafts and landing gears. An aircraft with tricycle landing gear arrangement is considered for the simulation (fig.2). Braking of the aircraft is not an ABS braking. Considered weight of the aircraft is 2250kg and the taxiing speed is applied as 100knots. The runway profile is given as a flat road having a cosine curve shaped dip. Oscillations on pitch plane about the strut centerline are expected for the landing gear during the dip encounter.

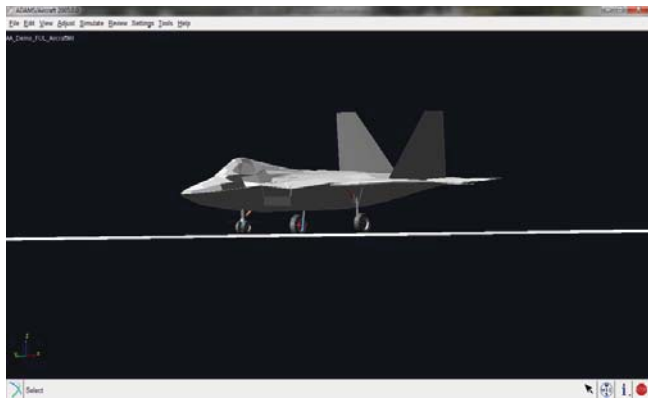


Fig. 2: Aircraft with tricycle landing gear

### B. Gear walk analysis using Abaqus CAE

As the part of simplifying the landing gear model an equivalent single beam model can be developed based on some assumptions. Table .1 shows the material properties of the landing gear. It is assumed that during braking no change in length occurs for the landing gear or constant stroke is assumed during braking. Since there is no change in length

during braking the whole structure can be considered as a single beam model. Assumptions are

1. Normal landing conditions are considered
2. Lateral slip conditions are ignored.
3. Longitudinal vibrations are considered.
4. Landing strut considered as continuous DOF cantilever beam.
5. Arbitrary stroke position is considered to simulate gear walk.
6. Drag strut is not considered for analysis.

Table 1: Material Properties

Parameter	Beam1	Beam2
$D_{1,2}$	0.15 m	0.13 m
$L_{1,2}$	1.469 m	1.188 m
$t_{1,2}$	0.005 m	0.004 m
$E_{1,2}$	2.1E+11 Pa	2.1E+11 Pa
$\rho_{1,2}$	7895 Kg/m <sup>3</sup>	7895 Kg/m <sup>3</sup>

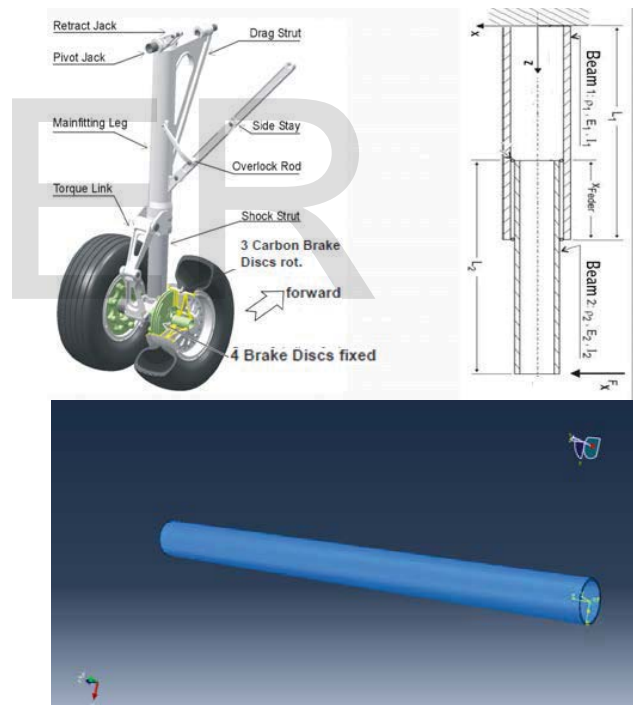


Fig. 3: .Equivalent Single Beam Model

The tire braking force given as a timely varying force which represent Anti Lock Braking System (ABS).

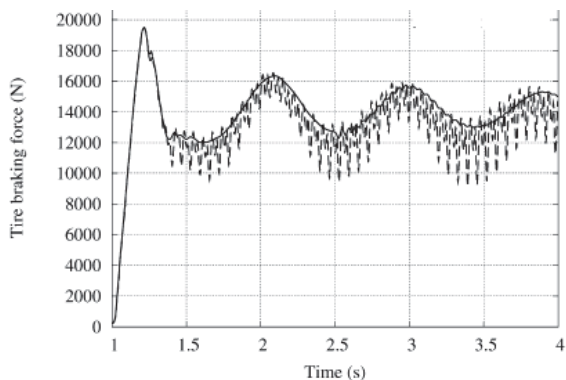


Fig. 4: Tire braking force

### III. RESULTS AND DISCUSSION

#### A. Taxiing simulation of an aircraft bump encounter

Taxiing simulation of the braked aircraft through a cosine shaped runway proves the effect of runway profile on the gear walk instability (fig.6). During the bump encounter, the aircraft landing gear shows some vibrations on the pitch plane. Those to and fro vibrations on the pitch plane can be classified as gear walk.

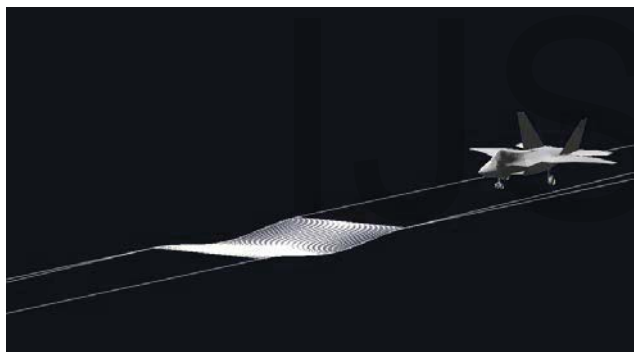


Fig. 5: Aircraft on a cosine profile runway

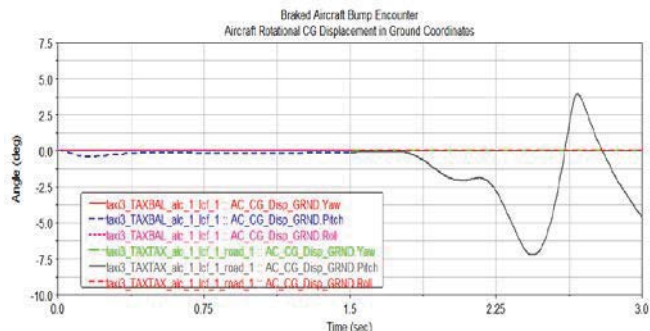


Fig. 6: Aircraft CG displacement along the pitch plane

It is very evident to state the influence of the runway profile on gear walk instability of an aircraft to which tip back design conditions are not considered (fig.6). This data should be very useful for designers of landing gears for emergency landing, rejected take off landing and landing on surfaces other than prescribed runways.

#### B. Gear walk analysis due to ABS brake gear interaction

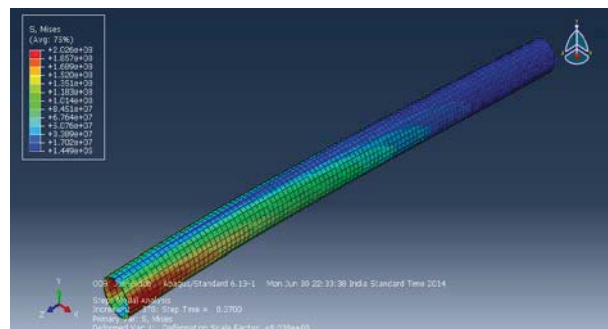


Fig. 7: Single beam stress pattern

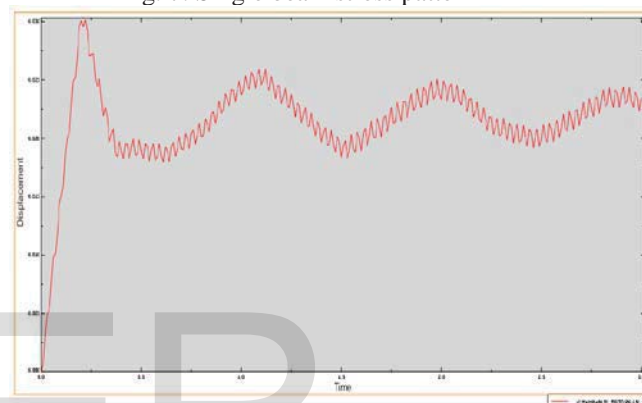


Fig. 8: Deflection plot

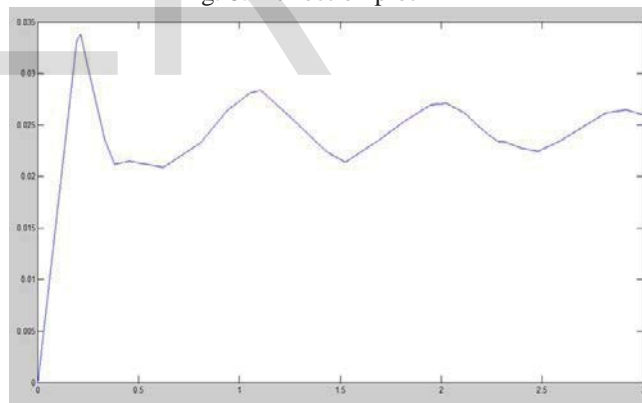


Fig. 9: Deflection plot obtained from mat lab

Table 2: Comparison

Single beam model	Max Amplitude(m)
Using Abaqus CAE	0.03
Using Mat lab	0.035
Reference [8]	0.035

It becomes much easier to analyse gear walk instability by using equivalent models. Two beam models can be used to predict the gear walk well, but for a particular stroke using single beam models can reduce modeling time and overall cost of the analysis. It seems that the single beam model gives gear walk analysis results matching well with that of two beam analysis results. It is shown in Table.3 Single beam model can be proposed as a model for predicting gear walk instability accurately for a particular stroke.

Table 3: Comparison between two beam and single beam models

	Frequency	Max.Amplitude	Stress
Two Beam	29 Hz	0.025m	236 Mpa
Single Beam	30.198 Hz	0.03m	202Mpa

C. Response at different Strokes

It can be seen that the displacement response of single beam model matches well with standard results. It can be suggested to use single beam model for analyzing gear walk for a particular stroke value. It is also possible to use the same model to analyse gear walk at different strokes just by changing the length of the beam (Fig.10).

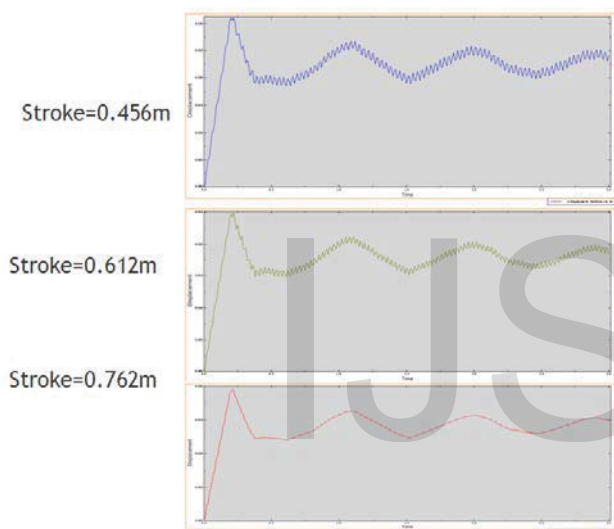


Fig. 10: Response at different strokes

Table 4: Comparison of responses

Stroke(m)	Frequency	Max. Amplitude(m)
0.456	30.198 c/s	0.03
0.612	35.160 c/s	0.025
0.762	41.167 c/s	0.02

Table.4 shows that as the stroke increases the effective length of the landing gear strut reduces and it increases the frequency and reduces the amplitude of vibrations. As this follows the general relation between the frequency and

amplitude, it further validates the suitability of the single beam model to predict the gear walk.

References

- [1] Conway, H. G, *Landing Gear Design*, Chapman and Hall London(1958): 7–330.
- [2] Currey, N.S, *Aircraft Landing Gear Design: Principles and Practices*, AIAA education Series(1988): 43–197.
- [3] Prashant.D.Khapane, *Gear walk instability studies using flexible multibody dynamics simulation methods in SIMPACK*, Aerospace Science and Technology (2005): 19-25.
- [4] W.Luber, G. Kemp, A. Krauss,Self-Induced Oscillations of Landing Gear as an Integral Landing Gear Aircraft System Problem, Daimler-Benz Aerospace AG (1995): 41-55
- [5] Kiran Christopher, *Selection of landing gear for RLV-TD and its dynamic analysis*. Thesis report to University ofKerala at Thiruvananthapuram.
- [6] Prashant.D.Khapane, *Simulation of aircraft landing gear dynamics using flexible multibody dynamics methods in SIMPACK*, ICAS(2004): 89-98.
- [7] Prashant.D.Khapane, *Simulation of landing gear dynamics using flexible multi-body methods*, ICAS (2006): 1-10.
- [8] Stefania Gualdi, Marco Morandini , Gian Luca Ghiringhelli, *Anti-skid induced aircraft landing gear instability*, Aerospace Science and Technology (2008): 627-637.
- [9] E. Denti and D. Fanteria, *Analysis and control of the flexible dynamics of landing gear in the presence of antiskid control systems*Daimler-Benz Aerospace AG (1995): 55-80.
- [10] Karthik Balasubramanian and Kambiz Farhang,*Gear Walk Instability Studies Using a Vibration Model of a Reduced Scale Landing Gear System*,Proceedings of DETC ASME (2002)
- [11] Haitao Wang et.al,*An investigation of active landing gear system to reduce aircraft vibrations caused by landing impacts and runway excitations*, Vibrations and Noise(2008).
- [12] James n. Daniels,*A Method for Landing Gear Modelling and Simulation With Experimental Validation*,NASA report(1996).
- [13] A.A.Yazdani et.al,*Dynamics simulation of an integrated landing gear system using MSC.ADAMS*, MSC software users conference(2013).
- [14] H.Vinayak et.al, *Pitch plane simulation of aircraft landing gears using ADAMS*, MSC software users conference(1998).
- [15] Cai-Jun Xue et.al., *Landing gear drop test rig development and application for light airplanes*, Journal of Aircraft (2012): 2064-2076.
- [16] H.Hall,*Some theoretical studies concerning oleodamping characteristics*, Aeronautical research papers(1967).
- [17] YST Raju et.al, *Design,modeling and simulation of Retractable aircraft landing gear hydraulic actuator*ISSN (2013 ): 1295-1303.
- [18] Mohammed Sadrey, *Landing gear design*, Daniel Webster College: 508-581.